

Passenger Terminal EXPO 2025

THE WORLD'S LEADING INTERNATIONAL
AIRPORT CONFERENCE AND EXHIBITION

SHOW PREVIEW

APRIL 8, 9 & 10, 2025

IFEMA MADRID, SPAIN

300+
EXHIBITORS

REGISTER FOR YOUR
FREE EXHIBITION PASS TODAY!
www.passengerterminal-expo.com



JOIN OUR ONLINE COMMUNITY: #PTExpoConf

HOST
AIRPORT



MEDIA
PARTNERS

PASSENGER
TERMINALWORLD PASSENGER
TERMINALTODAY

Passenger Terminal EXPO 2025

APRIL 8, 9 & 10, 2025

IFEMA MADRID, SPAIN

The world's leading international airport conference and exhibition!

REGISTER FOR YOUR
FREE EXHIBITION PASS TODAY!
www.passengerterminal-expo.com



Five REASONS TO VISIT

1

DISCOVER NEW TECH

Meet industry-leading exhibitors – with brand-new exhibitors added for 2025! Find new tech from an expected 300+ leading exhibitors showcasing the latest products and solutions within the industry

2

GET READY TO BE INSPIRED AT THE CONFERENCE

400+ expert speakers across three days will unpack the latest industry developments across 15 tracks

HOST AIRPORT



300+ EXHIBITORS

Passenger Terminal Expo is heading to Madrid for 2025! See the latest tech, reconnect with existing suppliers and meet new partners. Everything you need to plan your trip can be found in this handy guide to what to see and do

HEAR FROM 400+ INDUSTRY-LEADING EXPERTS

NOT TO BE MISSED... Skytrax World Airport Awards 2025 Live Ceremony WEDNESDAY, APRIL 9, 2025



The 2025 World Airport Awards will take place at Passenger Terminal Expo in Madrid, April 9, 2025. The Oscars of the airport industry, the awards always attract a large guest attendance, providing a fantastic networking opportunity to meet with senior teams from some of the sector's leading airports.



PAGE 17

3

NEXT-LEVEL NETWORKING OPPORTUNITIES FOR 2025

Whether you are on the expo floor or at the conference, there will be plenty of opportunities to network with industry peers

4

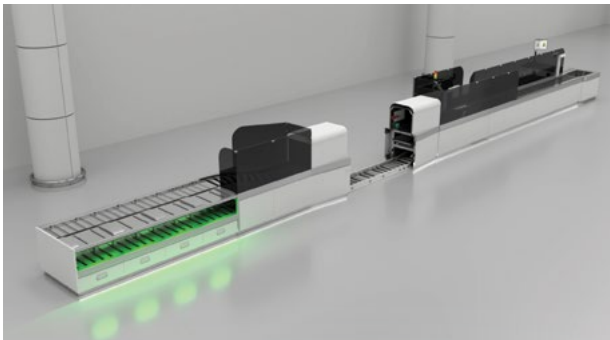
SKYTRAX WORLD AIRPORT AWARDS 2025

PTE provides the perfect platform, audience and atmosphere for the world's most celebrated airport awards, organized by Skytrax. Join us as we toast the winners!

5

HOLA MADRID!

Join us in Spain's beautiful capital city as we explore the latest industry developments together – and enjoy the picturesque surroundings



Automated tray return system

Leidos

The ProPassage automated tray return system (ATRS) features the latest in modular construction and flexibility. This third-generation model offers endless configuration options to suit each airport's requirements, making ProPassage the ideal solution for airports with high throughput needs or seasonal peaks that require temporary lane expansion to accommodate increased traffic.

The fully modular design enables faster installation and means the system can integrate seamlessly with leading checkpoint CT and x-ray scanners, significantly reducing operational impact. The reduced number of components and easy accessibility also simplify maintenance.

Fast in-field addition and removal of modules gives airports the option for lanes to be scaled up or down based on throughput needs. These configuration updates are easily managed within the HMI, resulting in little to no downtime.

Ergonomically designed, the ProPassage provides a familiar user experience with easy loading and unloading of hand baggage. With tray sizes that are larger than industry standard, passengers use fewer trays. The high sides reduce sweep-outs, eliminating the need for repetitive and time-consuming manual handling of trays by checkpoint personnel.

Booth 1400

**REGISTER FOR YOUR
FREE EXHIBITION PASS TODAY!**
www.passengerterminal-expo.com



AI-powered solutions for enhanced airport operations

TAV Technologies

AI is transforming airport operations, enhancing efficiency and creating smoother passenger experiences. TAV Technologies is at the forefront of this evolution, integrating AI innovations into its solutions for airport management. One of its flagship tools, Aero-genius, is an advanced AI assistant embedded in the total airport management system (TAMS). It offers intelligent, real-time assistance for operations, from flight planning to managing complex tasks, and transforms flight operations by offering swift tools to create, modify and manage flights within TAMS. Through advanced AI algorithms, it optimizes scheduling, gate assignments and resource allocation, ensuring efficient and seamless airport operations.

At Passenger Terminal Expo 2025, TAV Technologies will also feature a generative AI-supported design editor for flight information display systems, making it easy for airports to quickly create customized, copyright-free visuals for information screens. Additionally, TAV Technologies' AI-powered kiosk application enhances passenger interactions, providing quick, multilingual responses. These AI-driven advances enable real-time decision-making, optimize resource allocation and support a dynamic, responsive environment for all airport operations.

Booth 1500



A 'WALKTHROUGH' AIRPORT EXPERIENCE

Ink Innovation

As automation advances, the industry is moving beyond traditional static check-in processes. There is greater adoption of biometric-based common-use self-service devices and handheld devices designed to print boarding passes and baggage tags.

Ink Innovation (Ink) envisions a dramatic evolution in airport self-service offerings for the industry, which could potentially lead to a 'walkthrough' airport experience.

At the expo, Ink will unveil its Zero concept, which represents the next generation of devices and apps aimed at streamlining the airport experience with smaller, smarter and simpler hardware.

Booth 9713



BIOMETRIC ENTRY SYSTEM

Cognitec

Cognitec is bringing the latest version of its FaceVACS-Entry technology to PTE 2025. New features include a 5MP portrait camera, an upgraded matching algorithm and the ability to read QR codes presented to the portrait camera.

FaceVACS-Entry takes biometric photos and enables their comparison against facial images retrieved from ID documents or databases. The process also includes presentation attack detection to ensure a live person interacts with the device.

The slim, lightweight device fits wide-ranging installation scenarios, including e-gates, desks, kiosks, free-standing pillars and border control booths. Instant camera positioning,

active lighting and responsive user guidance lead to optimal capturing conditions, accurate person authentication results and fast processing times.

FaceVACS-Entry serves all applications that require the acquisition of standards-compliant photos, and the comparison of probe images against a live image or stored image data, such as access control, border control and entry/exit programs.

Booth 9316



Automated efficiency

Oliver Ledgard, EMEA government and aviation lead at Zebra Technologies, reveals how the firm's product launches planned for Passenger Terminal Expo 2025 will optimize airport passenger services

What will you be showcasing on your booth in Madrid?

Zebra will showcase the comprehensive range of technologies and solutions we offer to the aviation industry, with a focus on enhancing both the passenger experience and operational performance for airports and airlines. We will introduce new products and solutions, including the KC50 kiosk solution, and are excited to unveil additional yet-to-be-announced products at the expo. Key topics we will discuss include asset visibility, connected frontline workers and intelligent automation.

For the first point, asset visibility, we will demonstrate how timely and accurate information on critical assets and resources can provide actionable, data-driven insights. On the connected frontline worker topic, we will highlight how digitally connecting workers to systems that use data-driven insights can guide optimal actions and boost productivity. Finally, our intelligent automation discussion will showcase how automated sensing, machine learning/AI and autonomous robotics can enhance operational efficiencies through data-driven insights and actions.

How will this solution optimize airports today?

Our KC50 kiosk solution has been designed with airports and passenger services in mind and can be deployed in check-in areas as a self-service check-in solution. Moreover, the KC50 kiosk is an ideal solution for retail and



ABOVE
KC50 Android Kiosk Computer can be fitted with a barcode scanner, payment terminal and a digital assistant



We see **machine vision** technology bringing more **self-service** applications into the airport

hospitality in airports, acting as a self-service check-out and/or information kiosk, enhancing travelers' experience as they move through the airport retail and hospitality space.

In addition, the KC50 can be deployed in luggage handling areas as an information system, in MRO for maintenance tracking, and as a check-in/out solution for staff starting and ending their shifts. In short, the KC50 kiosk is an all-round service solution that can be deployed in multiple environments across an airport concourse.

What emerging technological trends are most likely to have the biggest impact on airports of the future?

RFID will continue to grow and play a major role in aviation, especially in applications to reduce flight turnaround times, where the use of RFID tags on safety and critical equipment on board aircraft can speed up manual processes. For example, counting life vests, which can be completed in seconds rather than minutes using RFID; in MRO, enabling easier compliance for tracking of parts, tools and equipment used; and in bag handling, to reduce baggage loss. Also, scanning will continue to be a relevant technology, and we will

BELOW
KC50 22in Android Kiosk can also be mounted on a stand system with a power brick or a printer



only see more applications, such as baggage dimensioning, using handheld devices, enabling staff at the gate to establish if the bag size meets or exceeds airline cabin bag policies, and can be boarded or placed in the hold.

Finally, we see machine vision technology bringing more self-service applications into the airport, enabling airlines to introduce unmanned bag-drop kiosks, with the technology being used to not only read the bag tags but also dimension baggage, supporting more effective load planning for ULDs in the aircraft hold.

What are you looking forward to most about the expo?

I'm looking forward to having the opportunity to show and demonstrate the new technologies we will bring to Passenger Terminal Expo 2025, meeting customers and partners, networking with other delegates and visitors, as well as building new relationships across the entire industry. ■

Visit Zebra Technologies at Booth 1701

Smallest checkpoint CT in the industry

SureScan Corporation

The Detect 1000s – on display at the expo – is SureScan's next-generation checkpoint CT that supports airport needs for employee or passenger screening. It has been designed to fit in the tightest spaces – at less than 2.5m in length, it has the smallest footprint in the industry. The system processes 150 images per hour. Single-sided maintenance access means it can be set against a wall or support post. Thanks to a dual-use workstation, the Detect 1000s can be operated by a single operator. It is EDSCB C3 certified and fully supports open architecture requirements, generating DICOS files, accepting third-party algorithms and supporting multiplexing.

Booth 1432



REGISTER FOR YOUR
FREE EXHIBITION PASS TODAY!
www.passengerterminal-expo.com



FULLY MANAGED APPROACH TO PASSENGER FLOW

Xovis

Switzerland-based passenger flow management veteran Xovis offers purpose-built 3D stereovision technology to ensure accuracy and stability even in highly complex environments.

Always innovating, Xovis is building on its reputation for reliable, highly accurate passenger flow management solutions, accelerating tool development and deployment with its cloud-native platform, Aero.

Aero reflects Xovis's fully managed service approach to passenger flow management. The company is known for designing and manufacturing AI-powered technology, and Aero's operational optimization functionalities solidify its position as a one-stop shop for airports unwilling to guess about data accuracy or risk long-term stability on short-term promises.

Aero offers more control over maintenance and update scheduling, a broader suite of measuring and reporting tools, and precise real-time data, making it a go-to solution for airports of all sizes. Find out more at Xovis's booth in Madrid.

Booth 1614

Elevating airport interiors

Arconas

Arconas is a trusted source for airport and passenger terminal furniture. At 2025's Passenger Terminal Expo in Madrid, its Avro seating ecosystem will once again take center stage as a versatile and sustainable seating solution for the modern traveler.

Avro is designed with modular flexibility and timeless aesthetics to adapt to the evolving needs of travelers and airport environments. Built with circularity in mind, it features durable, eco-conscious materials that support a longer lifecycle

while reducing environmental impact. Its universal beam structure allows all seat types to be easily and intuitively installed, removed or replaced, making it perfect for busy airports.

Also showcased at the booth will be the emBARq workstation, which combines technology with design to create a powered workstation/table that enhances passenger convenience. Available in multiple lengths and heights, including ADA-compliant height, emBARq is equipped with wireless Qi charging pads as well as AC, USB-A and USB-C outlets, offering an effortless charging experience. Its minimalist design blends seamlessly into diverse spaces while prioritizing comfort and accessibility.

Arconas will be exhibiting with Auweko, Green Furniture Concept and USM Airportsystems, offering everything needed to elevate airport interiors.

Booth 1210



Optimized turnarounds can save airports millions

Assaia

Assaia will showcase its AI-driven solutions at Passenger Terminal Expo 2025, highlighting how its technology can revolutionize turnaround management. By harnessing computer vision, Assaia aims to bring new visibility and control to airport turnaround operations, reducing delays, improving efficiency, boosting profitability for airports and airlines and helping get passengers to their destinations on time.

According to Assaia's recent *Turnaround Benchmark Report*, airports implementing the company's turnaround solutions have seen ground delays decrease by 6% and turnaround times improve by 4%. This key improvement translates to more efficient gate use, enabling one additional aircraft turn per gate per day –



maximizing airport capacity and enhancing airlines' turnaround efficiency.

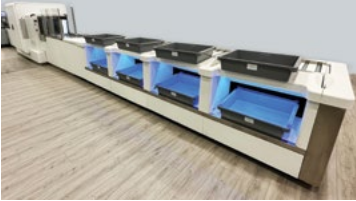
While stressing the critical role of technology in tackling aviation challenges, such as rising demand, limited capacity, fuel costs and sustainability pressures, the report also reveals regional differences, with European airports achieving higher gate use but lower on-time performance than those in North America.

At Passenger Terminal Expo 2025, Assaia will showcase how it helps create safer, faster and more efficient airport operations, supporting the industry's growth and evolving needs.

Booth 9521

Groundbreaking airport security screening

Cassioli



The Fast2Check ATRS (automatic tray return system) developed by Cassioli is a groundbreaking innovation in the field of airport security screening and will be on display at the expo. This automated system is designed to efficiently and swiftly manage passenger flow at security checkpoints, enhancing safety and the user experience.

Thanks to advanced technology, Fast2Check ATRS automates the return of trays used for screening, drastically reducing waiting times and making the security process smoother and safer. Every detail is meticulously designed to optimize workflow so operators focus entirely on security rather than manual handling.
Booth 9109



BAGGAGE 4.0: TRANSFORMING END-TO-END BAGGAGE OPERATIONS

Vanderlande

At Passenger Terminal Expo 2025, Vanderlande will demonstrate the progress it has made toward achieving its Baggage 4.0 vision, with a particular focus on the automation of handler processes. Visitors will be able to see the latest innovations that will transform this traditionally labor-intensive and costly process. These include the Bagload robotic bag-loading solution, along with Fleet Batch, which automates the transportation and storage of loading devices.

These innovations are integral to Baggage 4.0, which emphasizes sustainability and automation as well as digitalization for seamless end-to-end operations. Central to Vanderlande's vision are advanced technologies such as autonomous vehicles, robotics, artificial intelligence and smart controls. Powered by the company's modular VIA Digital Suite, Tubtrax individual carrier system and a comprehensive service offering tailored to customer goals, these technologies drive the future of baggage handling.

Booth 1530

AIRPORT INTELLIGENCE WITH COMPUTER VISION

Acorel

At Passenger Terminal Expo 2025, Acorel will present its new airport intelligence solution that uses IoT and computer vision.

Acorel provides real-time passenger counting solutions through its innovative computer vision technology based on neutral network and CCTV cameras. Taking advantage of AI and ML, it has developed specific algorithms to manage traveler flow. A dedicated processing unit installed in the airport analyzes the video images from the CCTV cameras, enables the counting of people and automatically calculates the occupancy of each part of the terminal. The main benefits of this



solution are the reuse of existing CCTV cameras, full compliance with GDPR, passenger flow improvement, accurate detection, and quick installation and maintenance. This cost-effective system optimizes airport management and the passenger experience. Acorel provides the complete architecture.

Booth 9203

Comfort-first design

Haute & Craft

With airports increasingly designed to enhance retail areas, Haute & Craft has introduced a new range of modular, ergonomic seating, planters and functional decor for common spaces. Its furniture – crafted with passenger comfort and aesthetic appeal in mind – responds directly to the needs of bustling, ever-evolving terminals. The Haute & Craft line combines adaptability with a clean, contemporary look that blends seamlessly into airport retail environments. Haute & Craft emphasizes easy reconfiguration to meet changing demands, ensuring that each piece offers the durability and flexibility modern airport spaces require. Find out more at the company's booth in Madrid.

Booth 9230



Explosives trace detectors

Bruker

Bruker will showcase two explosives trace detectors (ETD) for access and cargo control based on ion mobility spectrometry: the portable benchtop DE-tector Flex and the handheld RoadRunner.

The DE-tector Flex is a high-throughput instrument with an analysis time of less than eight seconds. It is ECAC certified for cargo and passenger control and is also TSA air cargo approved. The device needs no calibration, removing the efforts required for daily tasks. A dedicated software can be used to network and control large fleets of instruments.

REGISTER FOR YOUR
FREE EXHIBITION PASS TODAY!
www.passengerterminal-expo.com



The handheld RoadRunner offers the sensitivity of a benchtop system in a portable format. It uses the revolutionary new CHIRP-IMS technology for best detection performance and continuous automatic calibration for best performance and minimal user interaction. Bruker says that the RoadRunner is the world's only ECAC-certified handheld ETD. It weighs just 3.5kg and has a battery life of up to four hours, making it suitable for any mobile use.

Live demos will be performed at Bruker's booth.

Booth 9664

Airport kids' playground

Rodeco

At this year's expo, Rodeco – a pioneer of innovative and modular pop-up play solutions – will introduce a valuable addition to airport terminals: an attractive and safe playground.

Rodeco's playground is a pre-fabricated modular system that increases value for customers through an appealing and customized design, a free-standing setup without floor anchoring, and excellent adjustability for increased flexibility.

Rodeco knows how children play and proposes inclusive play areas, welcoming children of all ages and abilities to join in the fun. From accessible ramps to sensory features, every child can feel included and empowered to explore.

Booth 9230



Innovative airport technologies for enhanced passenger experience

Zebra Technologies Europe

At Passenger Terminal Expo in Madrid, Zebra will showcase a comprehensive range of technologies aimed at enhancing passenger experiences and operational performance in the aviation industry. The KC50 kiosk solution is engineered to enhance passenger processing with its user-friendly interface, expediting check-in and reducing congestion in busy terminals. Its robust construction ensures consistent performance in high-traffic areas, making it a reliable asset for airport operations.

Linerless print technology is a standout feature, offering an eco-friendly alternative by eliminating traditional liner waste. This sustainable approach reduces not only the airport's environmental impact but also the costs associated with waste management and materials. These high-speed, efficient printing capabilities are, therefore, ideal for fast-paced terminal environments.

Zebra's RFID technology boosts operational efficiency by enabling precise tracking of baggage and operational assets such as passenger wheelchairs and MRO equipment, enhancing safety and security while reducing delays. The company's machine vision technology will facilitate more self-service applications such as unmanned bag-drop kiosks, enabling effective load planning.

Zebra's handheld computer portfolio provides mobile solutions for airport staff, facilitating seamless communication and real-time data access. These devices, with their durable design and advanced connectivity, empower staff to efficiently manage tasks such as passenger assistance and operational oversight, thus improving overall terminal efficiency and service quality. Together, these technologies represent a holistic approach to modernizing airport operations, focusing on sustainability, efficiency and enhanced passenger experience.

Booth 1701



REVOLUTIONIZING AIRPORT CONSTRUCTION WITH A KIT-OF-PARTS APPROACH

WSP

WSP is applying a kit-of-parts approach to Manchester Airport's new pier, dramatically speeding up its delivery with a node that's constructed on-site from just 67 subassemblies. The company is working with contractor Mace to deliver the nodes and fixed links for the new pier, which will significantly expand its capacity by adding 12 new gates.

With WSP's kit-of-parts approach, the logistics strategy, temporary works and

details such as connections and crane lifting points are optimized early in the design process, smoothing the transition from design to factory to site.

By taking a kit-of-parts approach and rationalizing the design into fewer, larger assemblies, WSP has dramatically reduced the construction time on-site, and the risks and challenges of working in a live airport environment.

Booth 1109



REGISTER FOR YOUR
FREE EXHIBITION PASS TODAY!
www.passengerterminal-expo.com



Solving electric infrastructure challenges

ITW GSE

Many airports find themselves lacking e-GSE chargers due to the limitations of existing grid capacity. However, the majority of electric GPUs have excess electrical capacity at the input as most aircraft do not draw full load from the GPU. ITW GSE has recently introduced new solutions to exploit this excess power capacity from the grid, and will be sharing these at the expo.

The ITW GSE Power Share lets operators use the excess power from the grid without having to upgrade the gate infrastructure, as it distributes the power efficiently to e-GPUs or other charging applications.

Combining an ITW GSE 2400 GPU with a power share allows more 50/60Hz AC equipment to be charged even when the GPU is supplying 400Hz power to the aircraft at the same time.

Booth 1620



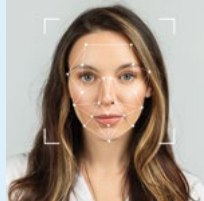
Walk-through biometric passenger ID

Idemia Public Security

Amid rising traveler volumes, limited resources and constantly changing travel regulations, efficient passenger processing that can ensure a pleasant experience is essential. To meet this challenge, the travel industry has embraced digital transformation, incorporating self-service and automated solutions that empower travelers to take control of their journeys and reduce stress. However, new approaches can streamline processes, enhance productivity and deliver more customer-centric travel experiences.

With over 50 years of expertise in biometrics and AI and a strong legacy of innovation, Idemia Public Security will introduce On-the-Go, Multi-Passenger Processing at the expo – a breakthrough concept designed to eliminate friction by enabling groups of travelers to pass through security without stopping.

Powered by Idemia's advanced facial recognition algorithms, this solution provides real-time traveler tracking, simultaneous multiface capture and precise identification. It is designed to ensure secure, stress-free journeys, allowing travelers to enjoy airport amenities. **Booth 9625**



AUTOMATED BAGGAGE CONVEYABILITY ASSESSMENT

Leonardo Automation

Medium-size and large airports rely on high-performing automated baggage handling systems to screen and sort thousands of bags per hour. However, not all bags are the same; some, perhaps due to their shape or size, have to be handled through dedicated systems (the so-called 'out of gauge' or 'exception' bags). How can airports and airlines ensure that ground handlers respect the specifications and ensure that exception bags are not



inserted into the standard baggage handling system? Visit Leonardo Automation's booth to learn how AI can automate conveyability assessment, ensuring compliance, performance and equipment availability while minimizing bag damage. **Booth 9214**

REGISTER FOR YOUR
FREE EXHIBITION PASS TODAY!
www.passengerterminal-expo.com



Airport workspaces for travelers

Hut

Hut is pioneering a pay-as-you-go workspace solution tailored for the modern professional. Each Hut is equipped with an advanced air purification system that constantly refreshes the air, ensuring a clean and invigorating atmosphere that enhances concentration and well-being.

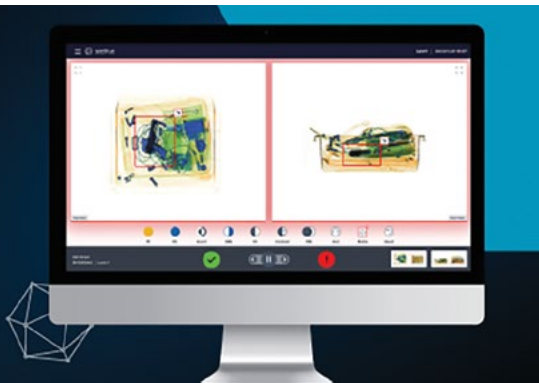
Designed with high-end acoustics, Hut provides over 30dB of noise reduction, creating an oasis of silence ideal for focused work. The smart cabins foster productivity by offering a distraction-free environment that supports remote professionals and on-the-go workers looking for a peaceful space. Find out more at the Hut booth at PTE 2025. **Booth 9636**



APIDS-READY CT CHECKPOINT WITH AI

SeeTrue

Airports around the globe are seeking a more secure and efficient screening process due to high traffic at security checkpoints, hold baggage areas and customs. SeeTrue has sought to address this need by offering AI-based automatic threat detection solutions designed for seamless integration with standard x-ray and advanced CT machines. By enhancing existing technology, the solution supports manual processes, enabling faster throughput while boosting security and improving the passenger experience. This integration not only optimizes the screening process for travelers but also strengthens customs operations. Discover more at the show. **Booth 9010**



Plant-based materials for sustainable furnishing

Böln

Böln has developed a technology that uses plant-based materials for furniture and equipment that

provides contract spaces with expressiveness, emotion, well-being and comfort. The collections are made with Flexyskin, a proprietary technology that uses an innovative polyurethane foam made from plant waste, which creates fluid and solid volumes with a surprisingly soft and plush feel. The material and the manufacturing technology enable the company to produce highly durable, sturdy pieces with fireproof, waterproof and antibacterial properties, which perform exceptionally well in contract spaces and outdoors. Find out more at the expo. **Booth 9433**



Airside 4.0: pioneering fully automated docking with innovative FOD integration

ADB Safegate

ADB Safegate and London Gatwick have partnered to launch a new project that will investigate whether the way airports operate can change. They're introducing an automated system designed to detect debris on the apron. Foreign object debris (FOD) detection, seamlessly integrated into the arrival and the docking process, is a significant innovation in ADB Safegate's intelligent apron platform, which aims to make the whole process of docking, turnaround and push-back smoother, safer and more sustainable.

Airside 4.0 envisions a future where airside operations are interconnected, streamlined and efficiently managed. The Intelligent AiPRON suite of products is designed to optimize aircraft turnaround, ensure safety and provide real-time insights and operational efficiency.



This innovative detection system revolutionizes traditional FOD management by ensuring seamless integration with other automated systems within the Intelligent AiPRON suite.

By collectively leading the charge, ADB Safegate and London Gatwick are not only imagining the future of air travel but are actively creating it. During the PTE Conference, representatives from London Gatwick and ADB Safegate will deliver a joint presentation about this project, and visitors can find out more at the ADB Safegate booth at the expo.

Booth 1102



NEW-GEN BAG-TAG PRINTER

BBC

BBC's first-generation Tagomat is a quick and easy way of printing bag tags. At the expo, the company will showcase its second-generation Tagomat – a more rugged version that can be placed outdoors. The unit is modular and can easily be configured with equipment such as a payment terminal, ADA keypad, passport scanner and hand scanner. The unit has a large touchscreen and a dual printer with smart switching technology. The Tagomat G2 can be delivered with weighing scales and a camera for measuring and classification of bags, ideal to validate carry-on baggage at boarding gates.

Booth 1531

REGISTER FOR YOUR
FREE EXHIBITION PASS TODAY!
www.passengerterminal-expo.com



Optimizing passenger flow with innovative solutions

Amorph Systems

At Passenger Terminal Expo 2025, Amorph will showcase its latest advances in real-time passenger flow

management and predictive analytics. Its Amorph.aero platform provides airports with powerful tools to optimize resource allocation, minimize congestion and streamline operations. Precise, real-time passenger movement data is provided by Amorph.senses, a lidar-based solution with innovative features. It enables configuration planning with 3D modeling to identify and validate the optimum number and locations of sensors for maximum coverage with minimum resources. A visual calibration tool allows automatic sensor leveling and easy cross-sensor alignment to minimize deployment and configuration time. The system automatically



learns and relearns the locations of all background, stationary objects and obstacles to minimize configuration effort and handle changing environments. Mirrors and reflective surfaces are marked to avoid duplications caused by reflected lidar rays. Monitored areas and queue layouts are easily configured using a powerful layout editor.

These cutting-edge solutions are designed to help airport operators make data-driven decisions in ever-changing conditions, enhancing operational efficiency and passenger satisfaction. Visit the Amorph booth for an exclusive demonstration.

Booth 1100



CENTRALIZED AIRPORT MANAGEMENT

AeroCloud

AeroCloud's booth will give visitors hands-on experience of the company's 360° curb-to-gate product suite, which brings the experience of airport management into a central source of truth to drive better outcomes for airports and their passengers. This includes: the frictionless Self-Service Bag Drop Kiosk and Common Use Self-Service Kiosk; the industry-first AeroCloud Optic computer vision technology, which tracks passengers from curb to gate; and modules of AeroCloud's innovative cloud-based management platform, including gate management and FIDS.

Booth 1510

Stay flexible

Simon Hayes, director of transportation at Sharp/NEC Display Solutions Europe, explores how modular LED solutions can support airports' net zero ambitions while futureproofing signage for changing regulations and traffic

What is the top technological solution visitors can expect from your booth?

Our LED solutions will feature prominently on our booth, offering airport operators extreme versatility in large surface visualization. Whether for outdoor or indoor advertising, wayfinding or FIDS, our LED technology enhances operational efficiency through improved passenger flow, multi-use performance, revenue generation and significantly enhanced energy efficiency. Our latest-generation LED series uses 60% less power than its predecessor at the same brightness.

The Sharp ePaper Display demonstrates our commitment to sustainable innovation. It was recently recognized as Visual Technology of the Year 2024 by proAV. At zero energy use during content playback, ePaper presents significant potential for the



future of digital signage in the carbon-neutral era. Much like a poster, content appears brighter in high ambient light, displaying static images that can be updated instantly, making it ideal for check-in or gate information.

What sets this solution apart from your competition?

What sets our solutions, and indeed our entire organization, apart is quite simply our commitment to quality. Our products are purpose-designed to withstand the most challenging environments and deliver dependable, long-lasting performance that brings our airport customers peace of mind and a remarkably low total cost of ownership. They are trusted for mission-critical performance where fire safety and reliability are paramount.

Airport operators also value the flexibility afforded by our modular design solutions featuring scalable

ABOVE

The latest generation Sharp/NEC LED technology consumes 60% less power

LEFT

Highly versatile and energy-efficient Sharp ePaper Displays can be moved to any location without the need to be connected to power networks

Raspberry Pi and Intel SDM computing for unlimited customization. Low cost, secure and long lived, our innovative custom-engineered Raspberry Pi computing solutions provide universal compatibility with airport infrastructures.

What are the top challenges facing airport executives today? How can they best be addressed?

With passenger numbers continually rising, amid the challenge of achieving net zero emissions, airport executives face a seemingly impossible conundrum. Seeking out efficiencies across all operations is crucial, and investing in the latest technologies will play a significant role in achieving this.

The use of digital signage for wayfinding and prominent FIDS is driving efficiency. As airports invest in the new Entry/Exit System (EES) to enhance border security efficiency, LED solutions offer all the flexibility needed to facilitate the seamless and secure movement of passengers. What's more, these versatile displays are highly energy efficient while offering an attractive return on investment through advertising revenue. This is efficiency, optimized!

What made you decide to exhibit at Passenger Terminal Expo 2025?

Face-to-face engagement is very important to us. We aren't simply offering display solutions to our clients – we are offering a partnership. We build lasting relationships with airports and software suppliers where trust is paramount for mutual success. Attending Passenger Terminal Expo enables us to demonstrate our integrity, connecting with stakeholders who also value trusted partnerships and peace of mind.

Passenger Terminal Expo is a highly focused industry event, and we are very much looking forward to discussing the needs of our partners and presenting solutions that last, for today and into the future. ■

Visit Sharp/NEC Display Solutions Europe at Booth 9424

These versatile displays are highly **energy efficient** while offering an attractive **return on investment**





Bespoke solutions to improve the traveler experience

Doublet Ibérica

Doublet International Group is a benchmark in bespoke airport and airline equipment and furnishings. For airlines, Doublet International Group provides pedestrian guidance systems, advertising signposts, tall directional posts, totems, partitions, baggage measuring devices, poster holders, counters and customized solutions, ensuring an integrated and efficient brand experience. At airports, its solutions range from queue management and displays to trash cans, ashtrays, hygiene and security equipment, furniture and charging stations, contributing to a smoother and safer travel experience for passengers.

At Passenger Terminal Expo, Doublet will introduce its latest range of mobile device chargers and baggage sizers that respond to today's demands for connectivity and agile baggage handling in the airport environment.
Booth 1700

REGISTER FOR YOUR
FREE EXHIBITION PASS TODAY!
www.passengerterminal-expo.com



ADVANCES IN AVIATION SECURITY

Rapiscan Systems

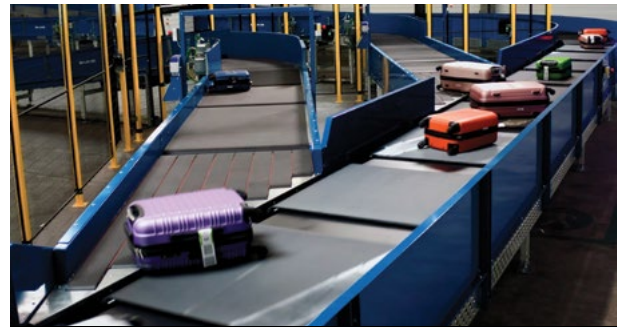
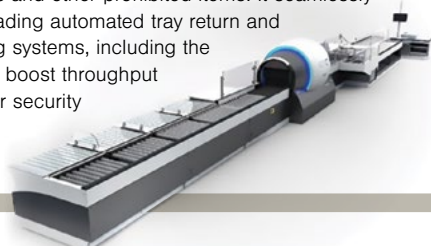
Rapiscan Systems will showcase its latest security technology at the expo. The Rapiscan RTT110 (right) is designed to enhance speed, efficiency and effectiveness in hold baggage screening (HBS) operations while reducing costs. It meets the stringent standards set by international regulators, including CAAC, ECAC 3.1, TSA 7.2 Certified and TSA ACTSL Qualified EDS Technology.



With its spacious tunnel, the RTT110 can screen up to 1,800 bags per hour, ensuring optimal performance in detecting prohibited materials. Its innovative non-rotational gantry and modular design allow for easy upgrades to keep pace with evolving technology. Additionally, the RTT110 significantly reduces false alarms, which enhances baggage handling efficiency and throughput while cutting operational costs.

The Rapiscan 920CT (below) is an ECAC C3 and TSA APSS 6.2 Level 0 approved checkpoint screening system for aviation cabin baggage. It delivers the highest-resolution full-3D images, enabling rapid on-screen inspection and resolution (OSIR) for automated alarms and other prohibited items. It seamlessly integrates with leading automated tray return and baggage handling systems, including the Rapiscan TRS, to boost throughput and create a safer security environment.

Booth 9428



SMART SOLUTION FOR BAGGAGE HANDLING

Alstef Group

XSort is a crossbelt sorter specifically engineered to meet the complexities of baggage handling, setting a new standard for airport operations. Unlike systems adapted from parcel sorting, XSort – on display at the expo – is purpose-built to handle the unique size, weight and characteristics of modern luggage, providing a tailored solution for today's aviation challenges.

Its compact design ensures seamless integration into new and existing infrastructures, even in space-constrained airports. Features such as a low height, minimal footprint and short-radius curves allow it to adapt to diverse layouts without the need for significant structural changes, making it a versatile option for modernization projects.

Safety and efficiency are prioritized in XSort's design. Fully compliant with EN619-2022 safety standards, the system protects operators and equipment while reducing maintenance disruptions with plug-and-play components and advanced diagnostics. Its energy-efficient linear motors and low-demand operational modes support sustainable airport operations, helping to reduce environmental impact and operational costs.

Booth 9524

Reliable, data-driven gate equipment

Oshkosh

Oshkosh AeroTech helps streamline airport operations, addressing current needs while also



advancing the future of the aviation industry. Its Jetway, JetAire and Jetpower brands have maintained their market leadership, building customer confidence with every bridge.

The iOPS monitoring system offers real-time data for fleets, providing critical visibility in airport and ramp equipment, as well as diagnostics clarity to help resolve issues faster and get equipment back on the runway sooner.

Sustainability efforts around the globe are increasing, but there is a gap between operational goals and building the infrastructure to achieve them. Oshkosh offers solutions to meet those objectives today while also building energy reduction into clients' future plans. JetDock and AmpTek deliver efficiencies that can save time, energy and resources. Find out more at the expo.

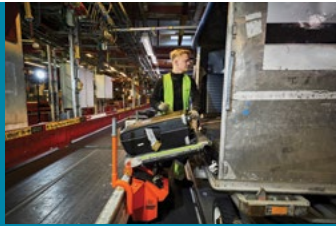
Booth 1810

ERGONOMIC UNLOADING AID

Power Stow

Power Stow will showcase its innovative unloading technology at PTE 2025. The equipment is designed to enable easy and efficient transfer of baggage and cargo from containers and carts onto the arrival belt in the sorting area. The Transfer Belt significantly reduces baggage handlers' workload, eliminating the need for heavy twisting and lifting movements. As a result, operators experience easier workdays and increased productivity. The operator uses one-third of the lifting force when pulling the bags onto the Transfer Belt compared with equipment that requires lifting and twisting. This semi-automatic unloading method greatly reduces the risk of back and shoulder injuries, resulting in improved working conditions and less sick leave, enables faster baggage handling and maintains consistent performance even during peak periods.

Booth 1730



Future-ready AAM and ORAT technology

Munich Airport International

To enable large-scale commercial advanced air mobility operations at airports, operators need to integrate eVTOLs into their complex airport ecosystems. Munich Airport International's experts will be at the expo to discuss the challenges to be solved to enable effective integration of AAM operations, and the necessary steps to establish an economically viable and operationally efficient vertiport at airports.

The experts will also offer their insights from over 30 years of successful worldwide ORAT project delivery. The opening of a new airport or terminal is highly complex and goes far beyond the infrastructure being ready at a specified date. Although the ORAT methodology sets a clear framework for an on-time and in-budget opening, there are many key success factors, which will be highlighted at the company's booth.

Munich Airport International will also advise on emerging consumer trends and their impact on shopping behavior. Terminal A at EWR, operated by Munich Airport NJ, was awarded a 5-star airport terminal rating from Skytrax – the world's highest rating for customer experience within an airport terminal. The company's experts will also discuss the trends in VIP terminals catering to passengers seeking a premium experience, and the factors driving the demand.

Booth 9452



Streamlined information sharing

Transoft Solutions

AeroCentral is Transoft Solutions' first SaaS solution for the industry. The cloud-based platform, designed to speed up and simplify how airport planning and operations teams share essential airside information, enables the integration of data from diverse sources – planning data, operational data, mapping data and other documentation – into a single centralized platform. User-friendly and accessible across various devices, the tool hosts specialized applications for specific operational and planning tasks to support safer and more efficient decision-making.

The platform's first applications, Stand Guide and Specifications, enable airports, airlines and ground service providers to present and access information on various



aircraft parking stand configurations, equipment locations and turnaround procedures, as well as aircraft technical specifications.

AeroCentral is designed to save time, reduce data duplication and minimize the risk of data loss or error, strengthening interactions between planners, operators, airlines, ground handlers and other stakeholders for better collaboration. Meet the Transoft team at the expo in Madrid to find out more.

Booth 1007

REGISTER FOR YOUR
FREE EXHIBITION PASS TODAY!
www.passengerterminal-expo.com



AI-DRIVEN MAINTENANCE FOR X-RAY SYSTEMS

Danlex

PM4X LPR is an innovative, AI-driven, vendor-agnostic solution for real-time monitoring and condition-based and predictive maintenance of x-ray systems. It comprises real-time asset health monitoring, an early warning system for sending autonomous alert notifications to service specialists, and provision of remote resolution management with

recommended actions in response to any failures.

PM4X LPR, on display at PTE, gives users the ability to proactively make informed decisions to optimize the maintenance process, reduce maintenance costs, ensure seamless functionality and guarantee high availability of x-ray systems.

Booth 9015



A visionary collaboration to decarbonize the future of flight

Sidara

Sidara Collaborative is in discussions with University College London (UCL) under the university's Grand Challenges initiative to establish a pioneering Centre for Sustainable Aviation to inspire a transformative wave within the industry and unleash the potential of sustainable flight. This visionary partnership aims to bring together industry and academic leaders to address one of the most critical global challenges: decarbonizing the aviation sector. Through this collaboration, Sidara seeks to leverage its expansive network and expertise to catalyze innovation in sustainable aviation technologies and practices.



Sidara's state-of-the-art Showcase in London will serve as a hub for this collaboration to accelerate decarbonization across the aviation industry. By fostering partnerships with UCL's flagship teams and centers of excellence, the initiative aims to champion pioneering research and entrepreneurial ventures, driving forward solutions that diminish the environmental impact of air travel while promoting economic growth through cutting-edge solutions. Find out more at Sidara's booth at the expo.

Booth 9820

REGISTER FOR YOUR
FREE EXHIBITION PASS TODAY!
www.passengerterminal-expo.com



NEXT-GENERATION DIGITAL PLATFORM FOR SEAMLESS GROUND HANDLING

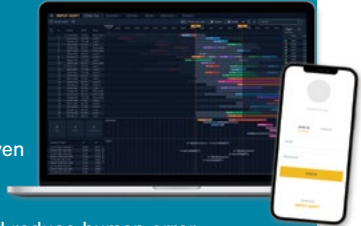
Input Soft

Input Soft will present its digital platform dedicated to transforming ground handling with data-driven decision-making.

Designed to eliminate manual processes and reduce human error, this solution automates resource planning and rostering with AI algorithms, real-time situational awareness and billing processes. Built by aviation professionals for aviation professionals, the platform is designed to offer a user-friendly interface with cloud-based delivery, making it quick to adopt. Managers benefit from a web platform, while ramp employees have easy access through iOS and Android apps.

Input Soft empowers airports and ground handlers alike to transition seamlessly to modern, streamlined operations, enhancing operating efficiency and reducing disruptions.

Booth 9006



IN-DEPTH TRAINING FOR X-RAY SCREENERS

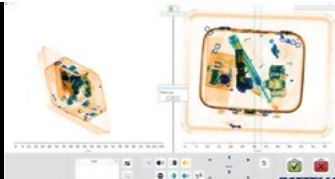
STI

Security is paramount, and x-ray image interpretation is of utmost importance. Detecting dangerous items in bags is not an easy task – it is a specific skill to learn. With the best image quality on the market, continuous IT developments and certified trainers who are all former screeners, STI provides state-of-the-art technology in image interpretation training.

Trainees will get familiar with innovative 3D CT technology. They will experience the difference between x-ray image representation in 2D and 3D, the contrast in color and shape, and structures or overlays in the visualization. The rotation of luggage enables screeners to look behind objects and see concealed threats, making it easier to search for bombs and prohibited items.

Every customer has their own requirements. STI makes every effort to fulfill these in the best way possible and is looking forward to sharing its knowledge at PTE 2025.

Booth 9914



Paper products for aviation

Zhejiang Lantai Paper Product

Zhejiang Lantai Paper Product is a comprehensive enterprise based in China. It offers boarding passes, bag tags, thermal self-adhesive labels, linerless thermal paper and adhesive stickers, and will be displaying its range at Passenger Terminal Expo 2025.

Various printers (Dymo, Brother, Zebra, IER, SATO) require thermal label rolls for printing medicine labels, commodity labels, warning labels, wine labels, tickets and RFID tags.

The company has ISO 9001, ISO 14001, ISO 45001, CE, FSC, MSDS, SGS and FDA certifications.

Booth 1001



New motorized gate improves queuing

Tensator

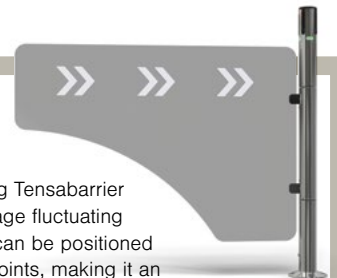
Tensator will be showing its new ShortcutQ motorized gate at the expo. The gate offers a dynamic solution for busy terminals, enabling staff to reconfigure queues on demand and create shortcuts for passengers through the most efficient route. With

wireless control capability, the gate changes position as needed, safely regulating the flow of passengers to reduce wait times and ensure a seamless airport journey.

The sleek, polished design of the ShortcutQ gate integrates effortlessly

with industry-leading Tensabarrier posts. Built to manage fluctuating traffic with ease, it can be positioned at multiple queue points, making it an essential tool for efficient, responsive queue management.

Booth 9311



Digital travel credentials

Secunet

Secunet will showcase the modern and easy travel experience with digital travel credentials (DTC) at this year's exhibition. Secunet has implemented a consistent DTC workflow across its entire border control portfolio. Proven software development kits enable the creation of DTCs in customer applications, and secure server components such as Secunet EasyServer accept, store, manage and validate them with state-of-the-art technology such as morphing attack detection and face recognition. Border control systems such as Secunet EasyGate, EasyKiosk and Bocoa ensure the smooth and secure use of DTCs in travel processes. Modern, digital passenger processes are necessary to ensure the competitiveness of airports and airlines in the future. DTCs offer a solution, as they enable smooth border crossings without compromising security and thus save travelers, airports and border control authorities valuable time.

Booth 9734



NEXT-GENERATION STAND AND GATE MANAGEMENT

Copenhagen Optimization

Assaia and Copenhagen Optimization have collaborated to enhance stand and gate management through ApronAI and Better Airport, both of which are already helping airports to optimize their processes. These technologies use AI to improve the accuracy of aircraft turnaround predictions and gate allocations, promising a new level of operational efficiency. The partners aim to replace outdated static scheduling methods with a dynamic, real-time approach that minimizes gate idle times and maximizes turnaround efficiency. Meet the team at PTE to find out more.

Booth 9724

Expert seating solutions

Guangdong Oshujian Furniture

OSJ produces and supplies a wide range of airport furniture, based on the manufacturing advantages of the whole industry chain. The company's smart manufacturing production base has an annual capacity of over 1.5 million seats, and the firm has a 60% market share in China's airport seating market.

Working with the world's best design teams, OSJ is constantly looking for ways to improve its products and processes, with flexibility and versatility in component design, customizing its products to meet the specific needs of clients' projects, and testing



equipment with up to 25,000 insertions and removals to ensure it can withstand the rigors of the airport environment. With decades of experience in delivering successful projects, the OSJ team is driven by innovation and works with global partners to explore the endless possibilities of public-area furniture. Find out more at the company's booth at Passenger Terminal Expo 2025 in Madrid.

Booth 1221

REGISTER FOR YOUR
FREE EXHIBITION PASS TODAY!
www.passengerterminal-expo.com



Remote vertiport/airport management system

Firstco

The team at Firstco will provide a walkthrough of the company's remote vertiport management system and airport management system, which have been built and commissioned in airports globally.

Firstco has designed a bespoke operating environment, considerate of the nature of operators' day-to-day tasks and their workplace patterns, all while ensuring minimum disruption to the live working environment. Multiple subsystems are now accessible from this single integrated control facility, including heating/ventilation, lighting, fire alarms, public announcements,

radio, telephones, CCTV, e-gates, boarding, charging and more.

The new system is highly flexible and scalable, allowing other systems to be integrated into the new SCADA. Importantly, the features on the system are now much more operator friendly, enabling the safe monitoring of multiple technologies. They can be added to any large infrastructure.

Booth 9905



MASTERING PEOPLE FLOW WITH LIDAR

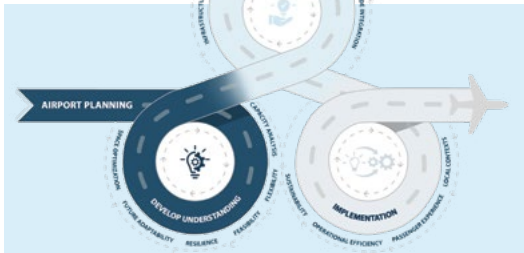
Veovo

Understanding passenger flow is at the heart of great airport experiences. Yet camera sensors can fall short, missing key insights and driving up costs. That's why Veovo has added lidar to its people flow toolkit – an advanced sensor technology that provides airports with crystal-clear insights in any light or layout.

Veovo's platform doesn't just measure movement; it lets users predict wait times, assess processing productivity, track shopping patterns and manage shifting check-in queues. Plus, with the company's sensor-agnostic platform, lidar can be combined with other tech for even deeper, smarter insights – whatever the use case.

Visit Veovo at Passenger Terminal Expo to learn how operators worldwide are transforming their operations with lidar insights, linking people flows with flight data and predictions to accelerate their paths to connected operational decisions and total airport management.

Booth 1302



Holistic approach to airport masterplanning and terminal design

To70 Italia

To70, one of the leading consultancy firms serving the aviation industry, offers a range of specialized services focused on delivering innovative, sustainable solutions. Using a holistic approach, it prioritizes sustainability, operational efficiency and exceptional passenger experiences to help airports become flexible, resilient and prepared for future demands while ensuring alignment with their unique local contexts.

The firm's work integrates cutting-edge solutions, leveraging the latest tools, dynamic simulations and capacity analysis to craft strategic planning for new and existing infrastructure. To70 emphasizes flexible, modular designs that accommodate growth, mitigate disruptions and adapt to climate risks. By incorporating space optimization and advanced demand forecasting, the firm develops infrastructures – including terminals, runways and taxiways – that seamlessly integrate airside and landside operations while minimizing environmental impacts.

To70 delivers smart solutions to systems and facilities during the planning phase. For more details, head to the company's booth in Madrid.

Booth 1008

NEXT-GENERATION THREAT DETECTION

Smith's Detection

The iCMORE automated prohibited items detection system (APIDS) uses

advanced AI to automatically detect a wide range of prohibited items in carry-on bags during CT security screening. By automating the identification of items such as weapons and restricted objects, iCMORE APIDS enhances security screening efficiency, providing critical support to security teams and creating a faster, smoother experience for passengers. Alarm-only screening reduces manual checks, driving operational savings and boosting checkpoint efficiency. Meet the Smith's Detection team at the expo to find out more.

Booth 9314



Automated high-definition walk-through body scanner technology

Rohde & Schwarz

Rohde & Schwarz's groundbreaking R&S QPS body scanner technology is redefining passenger and airport staff screening worldwide. The innovative R&S QPS Walk2000 scanner delivers truly walk-through, automated precision people screening to support the high-volume security screening airports need. There is no need to remove outerwear, coats or clothing for screening. The system provides automated detection of all concealed threats, contraband and prohibited items, including threats made from any material – metallic and non-metallic. It has ultra-low false alarm rates and uses specialized software for airport and passenger screening. See it for yourself at the expo in Madrid.



Booth 9530

REGISTER FOR YOUR
FREE EXHIBITION PASS TODAY!
www.passengerterminal-expo.com



PRACTICAL SOLUTIONS FOR LUGGAGE HANDLING AND DELIVERY

Gesnaer

Gesnaer will showcase two disruptive solutions for airports. GexoNAER offers a new way to manipulate luggage. It is an uncoupled exoskeleton for loading and unloading luggage from the trolley to the carousel. This idea will considerably reduce the weight load of suitcases and reduce operator injuries. B2P is an individualized luggage delivery system. With traditional baggage carousels, suitcases are frequently lost or do not arrive on time, resulting in dissatisfied customers. With the B2P system, passengers go to assigned boxes to retrieve their baggage. They identify themselves through their cell phones or a hall totem, then go to their assigned boxes and collect their suitcases.

Booth 9742



Automating alarm resolution at European airports

Halo X-ray Technologies

Halo X-ray Technologies has made groundbreaking advances in the operationalization of x-ray diffraction (XRD) for checkpoint screening operations. Halo's XRD platform, integrated with 3D CT scanner technology, adds significant threat and contraband detection and automates alarm resolution to increase checkpoint capacity and throughput.

Validated in real-world airport deployments with major European airport partners, Halo's XRD solutions, operating as a system of systems with checkpoint



CT scanner technologies, significantly reduce false alarms to support high-volume passenger screening operations.

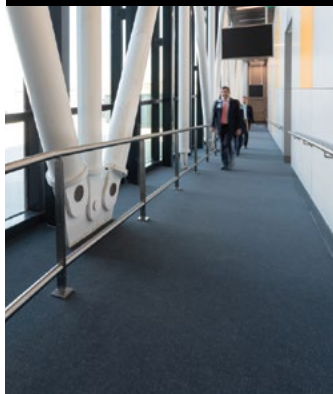
The company will showcase its XRD technology solutions at PTE 2025 and present how XRD's time has come to deliver more effective and efficient checkpoint screening operations for a greatly improved passenger experience.

Booth 9907

DURABLE FLOORING FOR IMPROVED SAFETY AND ACOUSTICS

Forbo Flooring

■ ■ Flotex is a high-performance textile floor covering ideal for heavy traffic locations such as airports. It has excellent sound-absorbing properties, which can help reduce noise, making airports more comfortable for everyone. The flooring is soft yet durable, and therefore comfortable for people who must stand for long periods, such as airport staff



and security personnel. The dense fiber structure provides slip resistance in dry and wet conditions, which is crucial for passenger safety in busy areas prone to spills.

Flotex is an anti-allergen flooring. The fibers capture dust and release it to standard cleaning appliances. It can be cleaned through simple vacuuming, steam cleaning or deep scrubbing with water, dries quickly and always reverts to its original appearance. It is designed to withstand heavy wear and tear in airports, making it a long-lasting option. It offers a balance of practicality and aesthetics and meets the stringent demands of airport environments, making it a highly functional and cost-effective choice. See the technology for yourself at PTE 2025.

Booth 1129

NEXT-GEN AIRPORT SECURITY AND OPERATIONS POWERED BY AI

BigBear.ai

■ ■ BigBear.ai will be at the expo to showcase its comprehensive, AI-driven solutions designed to revolutionize airport operations through seamless integration and enhanced security.

The company's portfolio includes facial recognition for seamless passenger identification, AI-powered threat detection software for baggage screening and advanced people flow management. By leveraging these next-gen technologies, BigBear.ai transforms airport security, operations and the passenger experience.

ConductorOS, BigBear.ai's AI orchestration platform, is designed to operationalize AI at the edge, with the potential to enhance interoperability across airport systems and support real-time decision-making. This capability aims to support highly advanced security use cases, such as threat detection and anomaly identification, and enhance operational efficiency by ensuring smooth transitions throughout security and check-in processes. By leveraging AI-driven security and operations through advanced ML algorithms and a combination of real-time and historical data analytics, ConductorOS is poised to empower decision-making capabilities, supporting faster responses to security threats and operational bottlenecks. This approach aspires to contribute to smarter, safer and more efficient airport environments. BigBear.ai's solutions are designed to integrate seamlessly with existing airport infrastructures, reducing manual intervention and enhancing throughput.

Booth 1130



PASSENGER FLOW MONITORING: MULTIPLE TECHNOLOGIES, ONE UNIFIED PLATFORM

Smart Flows

■ ■ Smart Flows is a user-friendly platform that integrates advanced technologies such as wi-fi, lidar and 3D cameras to simplify traveler flow monitoring. The company's innovative software – on display at the expo – delivers unparalleled data accuracy, empowering airport communities to make smarter, data-driven decisions.

From lidar's precision in spatial tracking to wi-fi's capability in analyzing curb-to-gate passenger behavior, Smart Flows transforms complex data into actionable insights. The platform delivers real-time alerts and helps airports predict crowd patterns, optimize staffing and enhance operational efficiency.

By unifying data from multiple technologies, Smart Flows ensures seamless access for airport users, streamlining operations and improving efficiency. Its software is a next-generation tool for ensuring seamless and proactive passenger flow management.

Booth 1108



Advanced avian radar

Robin Radar Systems

■ ■ Monitoring bird activity and curbing strike risk is an increasing challenge in aviation. Therefore, Robin Radar Systems' avian radar, Max, empowers safety and security teams with 3D, 360° coverage.

Deployed worldwide, Max tracks thousands of birds simultaneously, displaying real-time data in its intuitive interface. Its market-leading rotation speed delivers fast updates for precise tracking and classification. Multiple stacked beams also provide advanced clutter filtering for the most accurate readings.

Max stores everything it detects, organizing long-term data to inform risk collision models and effective wildlife hazard management policies. With Report Viewer, bird control teams can visualize daily, weekly, monthly or yearly data, analyzing environmental conditions, bird size, speed, altitude and more.

Booth 9750



Passenger Terminal CONFERENCE 2025

SHARE > INNOVATE > DEVELOP > DEPLOY

APRIL 8, 9 & 10, 2025
IFEMA, MADRID, SPAIN

CONFERENCE PLANNER

400+
SPEAKERS
EXPECTED

Completely independent and unbiased, the conference is strongly supported by major airports, airlines, aviation authorities and regulators. It offers a frank and open exchange of views and ideas, and attendance is simply essential for anyone keen to understand the challenges and opportunities ahead. Extensive networking opportunities add even greater value.



TOPICS INCLUDE

- Accessibility and assisted travel
- Advanced air mobility (AAM), vertiports and infrastructure
- Airport cities, regions and transportation connections
- Airport design, planning and development
- Airport design, planning and development – Middle East and Asia-Pacific
- Aviation security, technology, process and people
- Commercial development, retail, F&B, concessions and experience
- Customer service, passenger and workforce experience
- Digital identity and wallets in travel
- Environment and sustainability
- Facilities management and safety
- Future airports
- Increasing airport capacity and flexibility
- Management and operations – airside
- Technovation – AI, innovation and digital transformation
- Technovation – baggage, systems and integration
- Technovation – passenger journey – seamless, touchless



HEAR FROM THE BEST!

Early highlights*



Integrating AAM into airport ecosystems
Gina Dew, director, government and community relations, Tampa International Airport



Elevating the new Mega Airport City in Bishoftu
Mesfin Tasew Bekele, chief executive officer, Ethiopian Airlines
Tariq Al-Qanni, director of operations, Dar Al-Handasah Consultants



CPK terminal design: a resilient and futureproof scheme
Filip Czernicki, CEO, CPK – Centralny Port Komunikacyjny
Antoinette Erickson, senior partner, Foster + Partners



Digital travel credentials in the EU
Mikko Hakkarainen, team leader, document security and identity management, European Commission



The (untapped) potential of robotization in aviation
Siddhant Mehra, intelligence analyst, Lufthansa Innovation Hub

***See the event website for the full program**

PANEL DISCUSSION

From raising awareness to taking action and making progress

Moderator:
Roberto Castiglioni MBE, accessible air travel evangelist, Reduced Mobility Rights Limited

Brian Cobb, chief innovation officer, Cincinnati/Northern Kentucky International Airport

Heather Ansley, chief policy officer, Paralyzed Veterans of America

Elizabeth Hegarty, managing director – aviation and transport, Wilson James

Linda Ristagno, assistant director external affairs/accessibility and tourism policy, IATA

Sophie Morgan, TV presenter, inclusive travel writer, founder of Rights on Flights



NOT TO BE MISSED...

Opening keynote address

TUESDAY, APRIL 8, 2025
 08:25 – 08:55

Maurici Lucena Betriu, chairman and CEO, Aena, Spain

The conference begins with a welcome from UKi Media & Events, followed by the opening keynote address from Maurici Lucena Betriu, chairman and CEO of Aena, Spain*



*See website for details



Book your **discounted conference pass** today!

www.passengerterminal-expo.com

Discounts and group rates available for a limited period – see website for details

